



1. Kilvoydan South (Cl. 83) From South-West



2. Rylane (Cl. 84) From West



3. Toonagh (Cl. 86) From South-West



4. Ballyhickey (Cl. 87) From South-East



5. Knopoge (Cl. 88) From West



6. Knocknalappa (Cl. 89) From South-East



1. Corbehagh (Cl. 91) From North



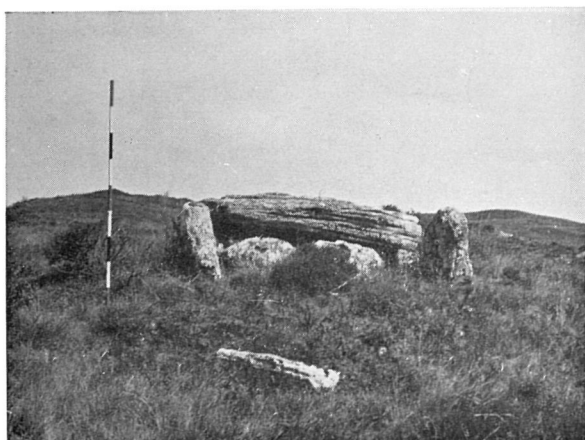
2. Fahy (Cl. 92) From South



3. Ballycroum (Cl. 93) From South-West



4. Ballycroum (Cl. 94) From North-East



5. Ballycroum (Cl. 95) From South-West



6. Cappaghabaun Mountain (Cl. 96) From North-East



1. Tyredagh Upper (Cl. 97) From North



2. Tyredagh Lower (Cl. 98) From North-West



3. Rosslara (Cl. 99) From North



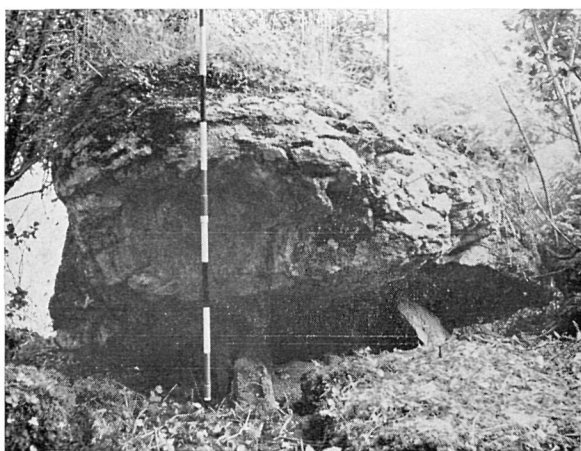
4. Ballyslattery or Newgrove (Cl. 100)
From North-East



5. Milltown (Cl. 101) From South



6. Lismeehan or Maryfort (Cl. 102)
From North-West



1. Clogher (Cl. 103) From West



2. Moymore (Cl. 104) From North-West



3. Elmhill (Cl. 105) From South



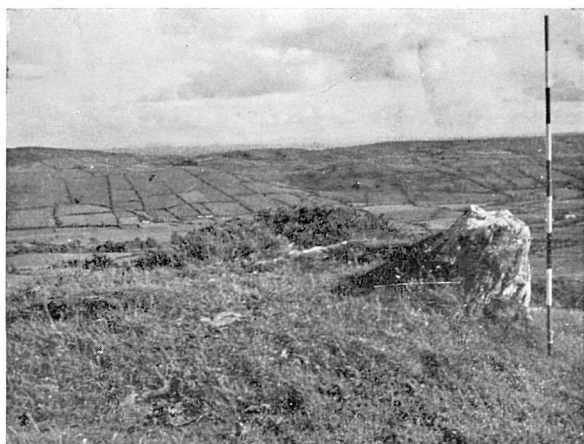
4. Bealkelly (Purdon) (Cl. 106) From North-East



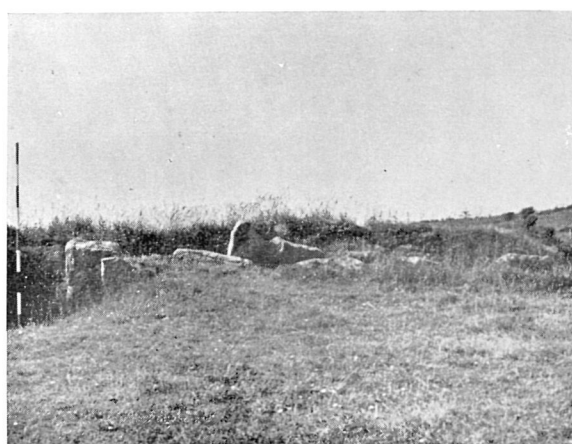
5. Violethill (Cl. 107) From West



6. Drummin (Cl. 108) From South



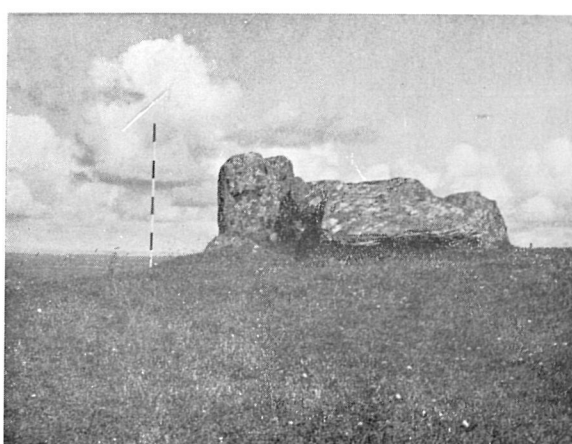
1. Cloongaheen West (Cl. 109) From North



2. Ardskeagh (Cl. 110) From South-East



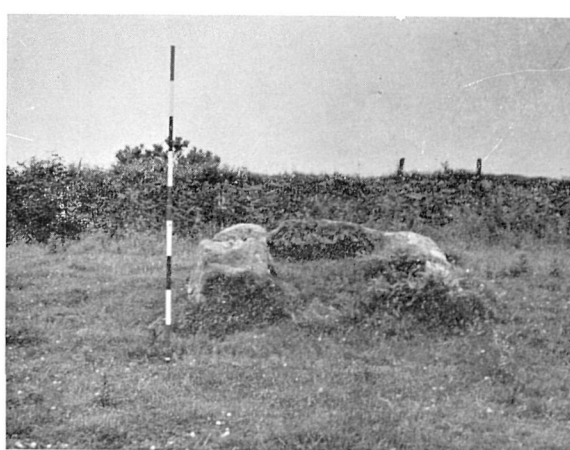
3. Killokennedy (Cl. 111) From South-West



4. Ballykelly (Cl. 112) From South-East



5. Cloonyconry More (Cl. 113) From North



6. Cloonyconry More (Cl. 114) From North-East



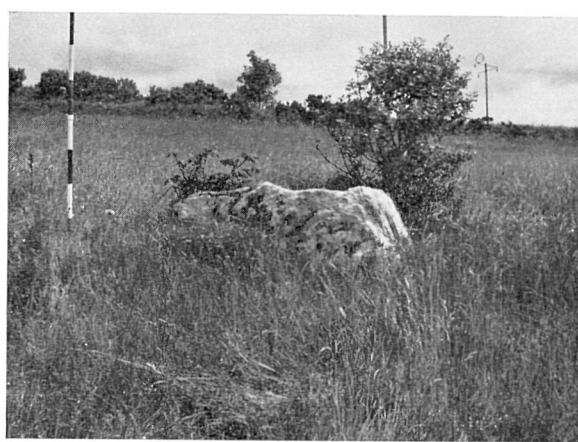
1. Formoyle More (Cl. 115) From North-West



2. Formoyle More (Cl. 115) From North-East



3. Knockshanvo (Cl. 116) From West



4. Cloghoolia (Cl. 117) From West



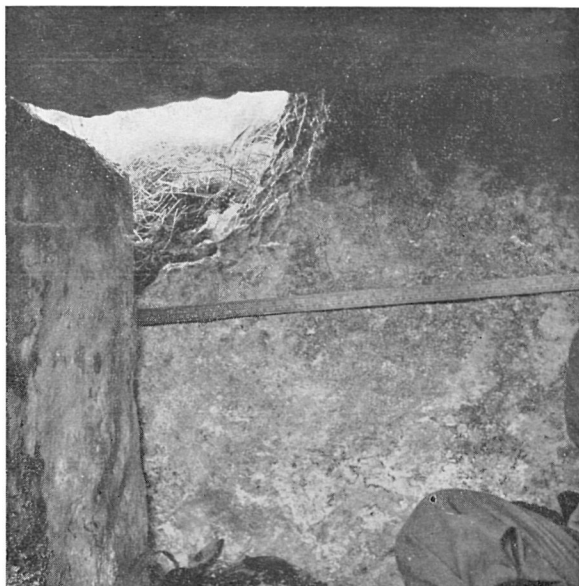
5. Ardataggle (Cl. 118) From South



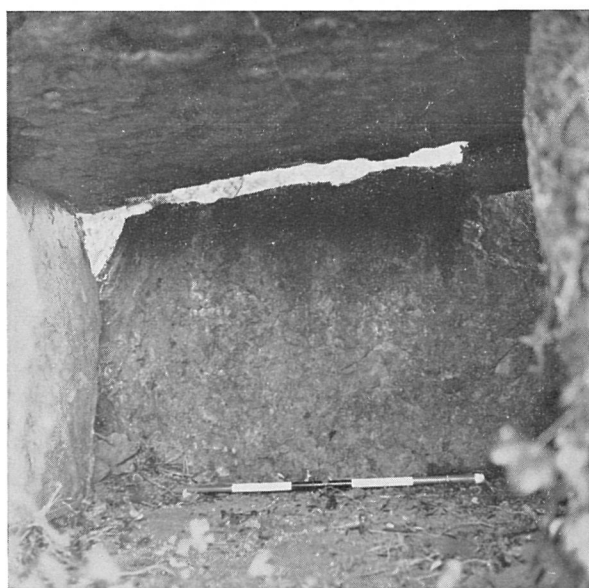
6. Bohat eh North (Cl. 119) From South



1. Poulaphuca (Cl. 20)
Inner face of east endstone



2. Baur South (Cl. 26)
Inner face of east endstone



3. Ballyslattery or Newgrove (Cl. 100)
Inner face of east endstone



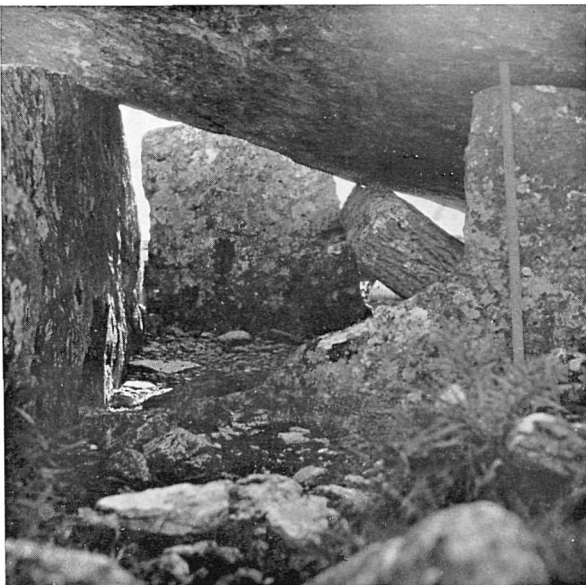
4. Ballynahown (Cl. 47)
Inner face of east endstone



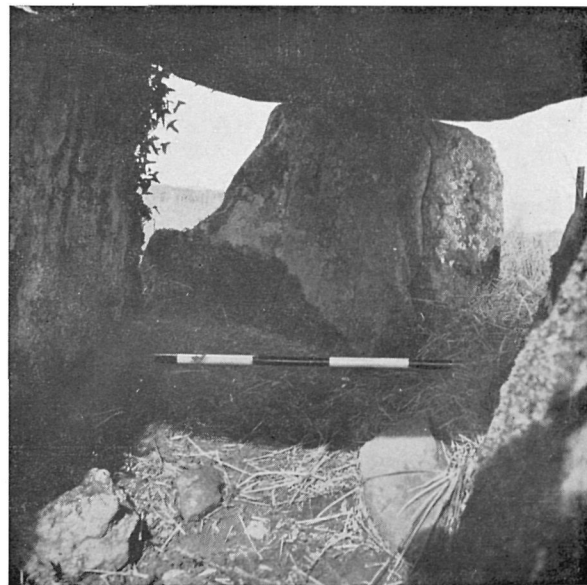
1. Creevagh (Cl. 43)
Inner face of east endstone



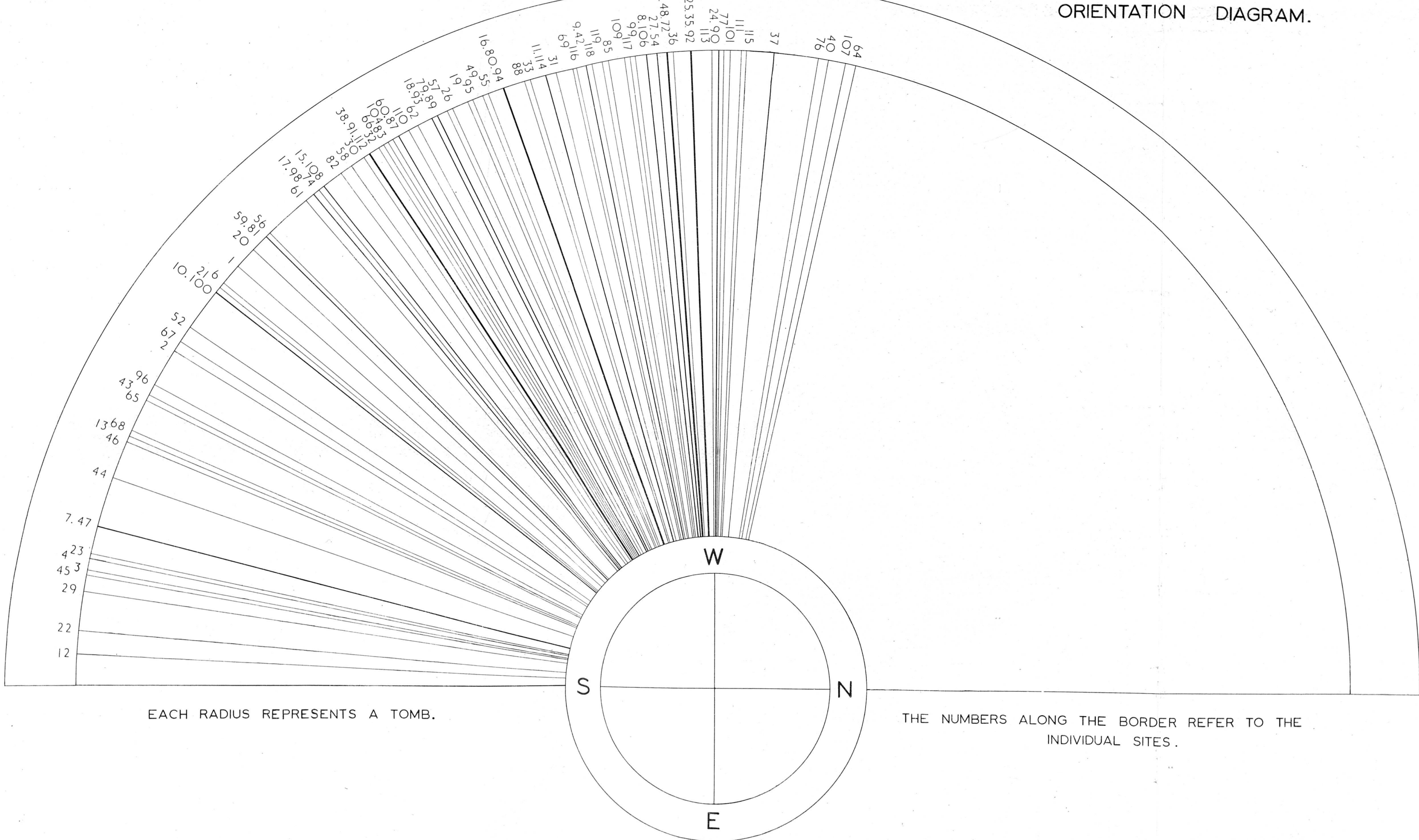
2. Deerpark (Cl. 39)
Inner face of east endstone



3. Fanygalvan (Cl. 33)
Segmenting stone and west endstone from east



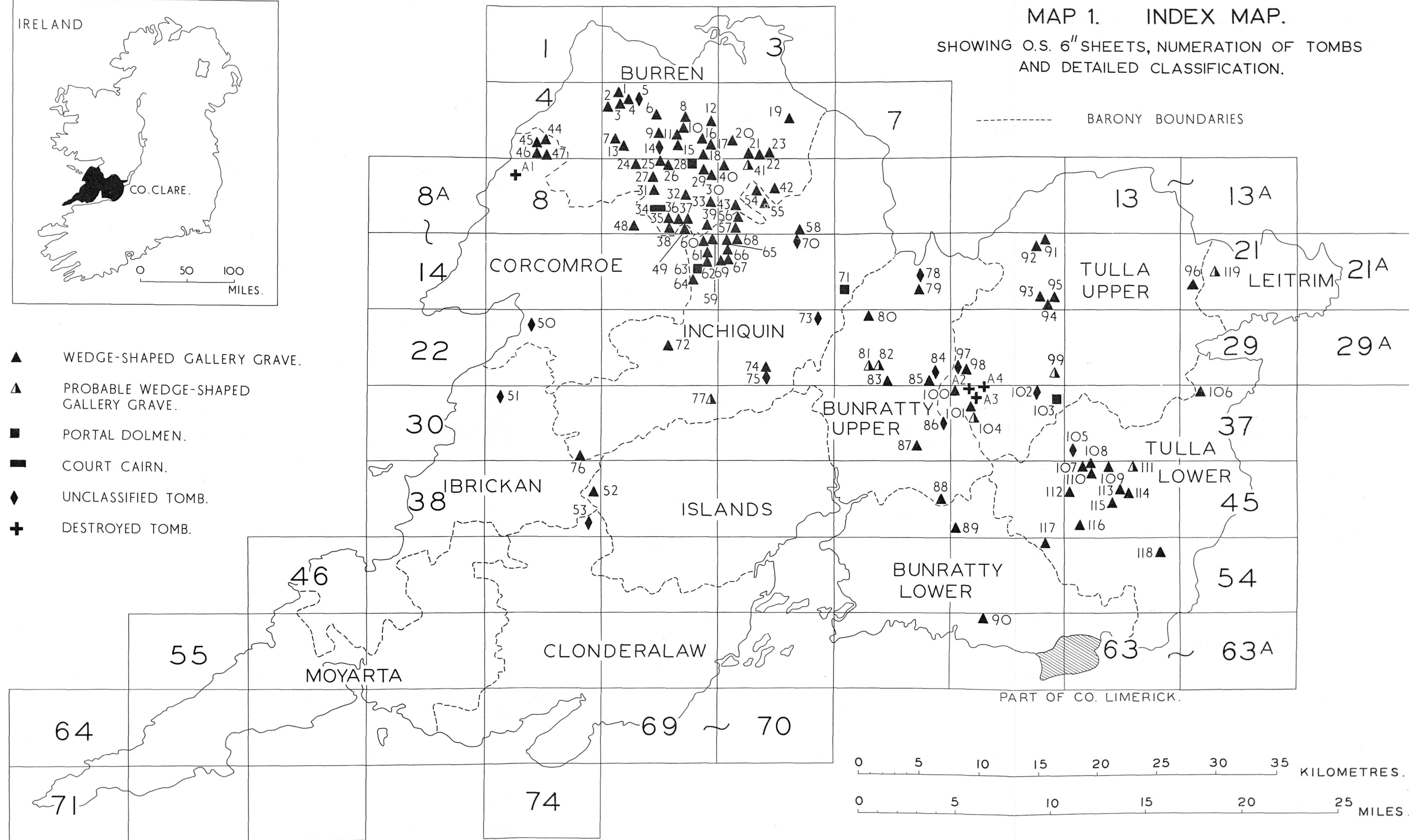
4. Knockshanvo (Cl. 116)
Inner face of east endstone





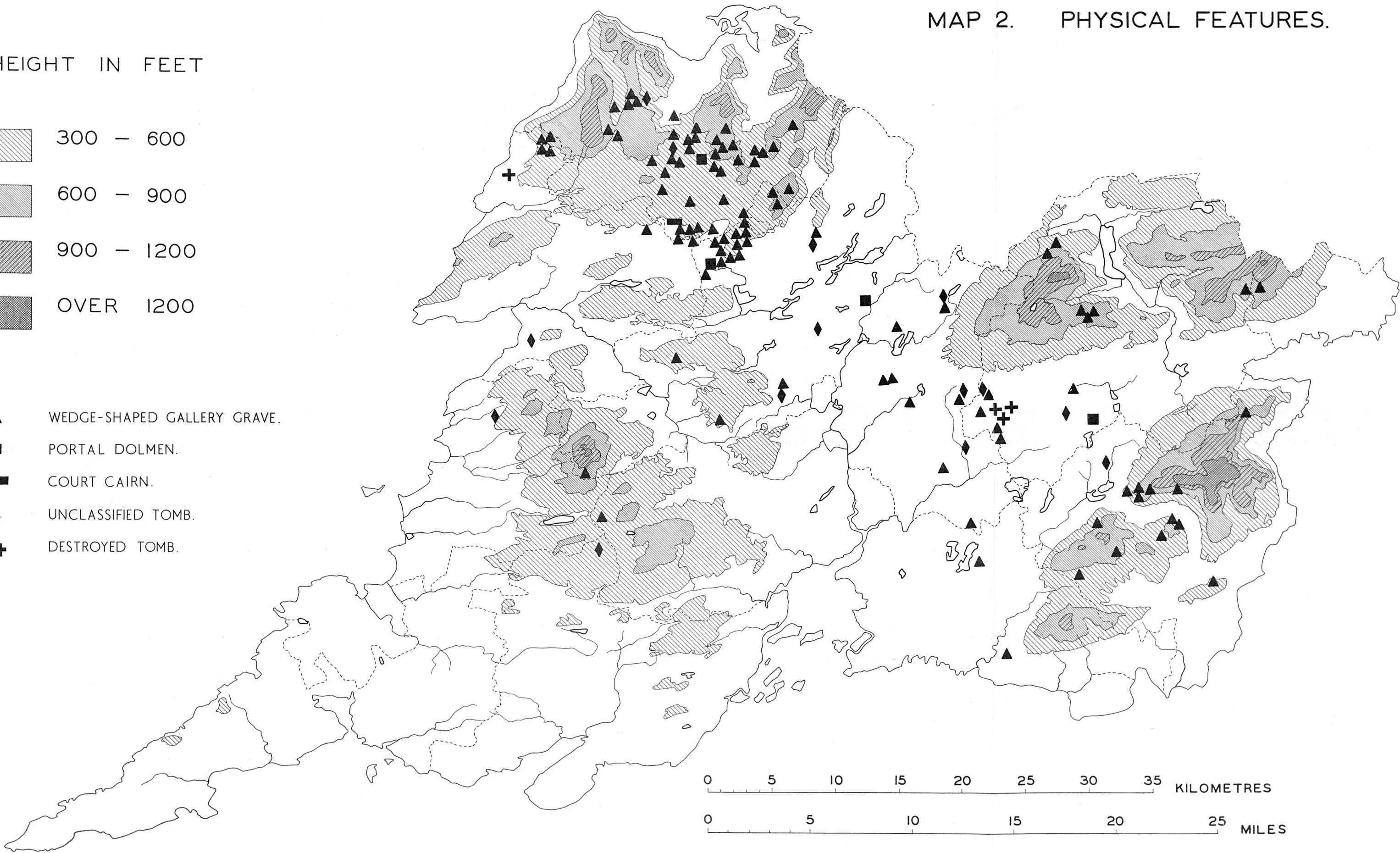
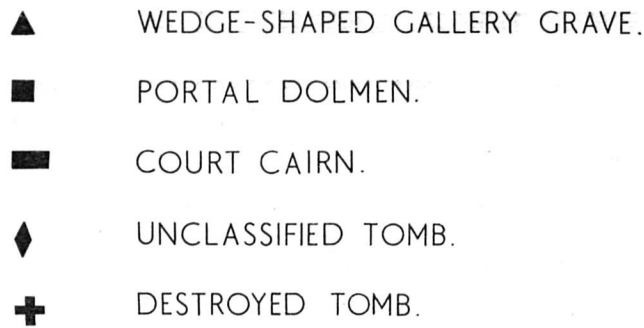
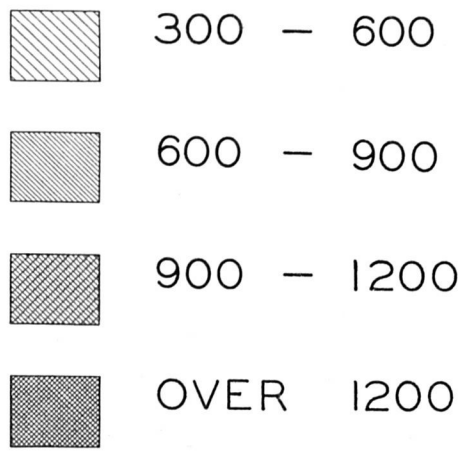
MAP 1. INDEX MAP.
SHOWING O.S. 6" SHEETS, NUMERATION OF TOMBS
AND DETAILED CLASSIFICATION.

- ▲ WEDGE-SHAPED GALLERY GRAVE.
- ▲ PROBABLE WEDGE-SHAPED GALLERY GRAVE.
- PORTAL DOLMEN.
- COURT CAIRN.
- ◆ UNCLASSIFIED TOMB.
- + DESTROYED TOMB.



MAP 2. PHYSICAL FEATURES.

HEIGHT IN FEET



MAP 3. MAIN GEOLOGICAL FORMATIONS.

(BASED ON 1" MAPS OF GEOLOGICAL SURVEY).

SHALE, FLAGSTONE AND
COAL MEASURES.

UPPER LIMESTONE.

MIDDLE AND LOWER
LIMESTONE.

OLD RED SANDSTONE.

UPPER AND LOWER
SILURIAN.

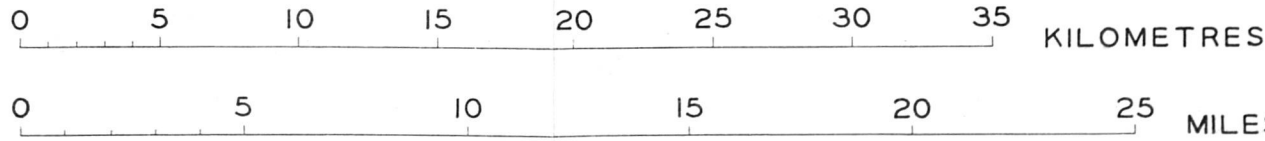
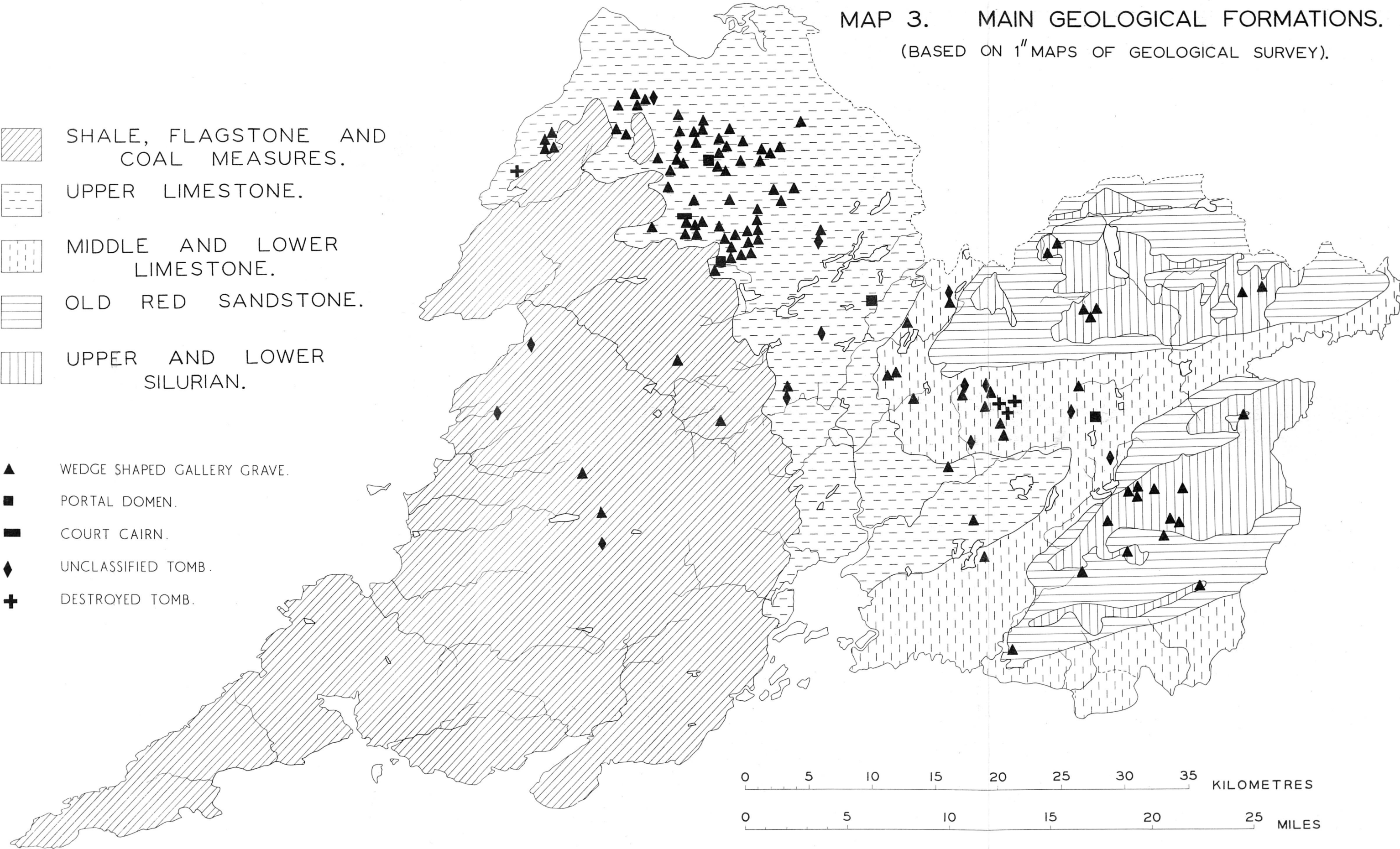
▲ WEDGE SHAPED GALLERY GRAVE.

■ PORTAL DOMEN.

■ COURT CAIRN.

◆ UNCLASSIFIED TOMB.

+ DESTROYED TOMB.



MAP 4. BOG ALLUVIUM AND DRIFT.

(BASED ON 1" MAPS OF GEOLOGICAL SURVEY).

N.B. HIGH MOUNTAIN BOG IS NOT SHOWN.

BOG AND ALLUVIUM.

DRIFT.

▲ WEDGE SHAPED GALLERY GRAVE.

■ PORTAL DOLMEN.

▬ COURT CAIRN.

◆ UNCLASSIFIED TOMB.

✚ DESTROYED TOMB.

